

sewerstream



Innovative Solutions for Wastewater Systems

We understand that your priority is to complete your project – on time and on budget. Making your job easier is our priority.

Our team have years of experience in polyethylene pipe systems, and we understand your requirements. We offer a full range of quality pipe, fittings and tooling to help you achieve your goal – customer satisfaction.

What's new in waste water . . .

Local authorities required a major shift in wastewater systems. Man entry into the sewer systems is a hazardous procedure, and technology now offers a better alternative. Also, traditional sewer systems frequently have joint or structure defects allowing infiltration of stormwater and tree root penetration.

The answer is Sewerstream. Welded polyethylene pipe systems have been in use internationally for many years in pressure applications. This technology is now available for use in sewer and wastewater applications.

Sewerstream offers a fully sealed system designed for use with CCTV and jet rodding equipment. This allows both horizontal and vertical curves to be introduced.

The majority of access structures in a sewerstream system are PE maintenance shafts, welded into the system. Man holes will only be placed at complex junctions and at strategic locations as required.

sewerstream

WHY USE PE FOR SEWER?

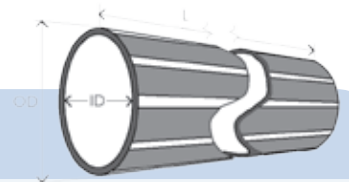
- **Fully welded system – no rubber ring joints, no root infiltration**
- **High pipe ring stiffness – exceeds SN8 in all sizes**
- **Flexible pipe in 6 or 12 metre lengths – reduced number of joints**
- **Light coloured internal surface - for CCTV inspections**
- **Pipe can be curved in situ – makes installation quicker and easier**
- **Less bulkheads required on steep slopes – makes a difficult job easier**

SEWERSTREAM PIPE

DUAL WALL CO-EXTRUDED FOR SEWER AND WASTEWATER

Pipe OD	Pipe ID	Length (L)	Code
110mm	99.5mm	6 metre	SSP11006
110mm	99.5mm	12 metre	SSP11012
160mm	144.8mm	6 metre	SSP16006
160mm	144.8mm	12 metre	SSP16012
250mm	226.2mm	6 metre	SSP25006
250mm	226.2mm	12 metre	SSP25012
315mm	285mm	6 metre	SSP31506
315mm	285mm	12 metre	SSP31512

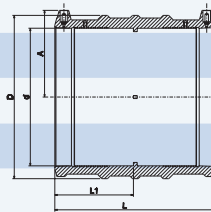
Heavier wall pipe available for tunnel boring applications.



SEWERSTREAM FITTINGS

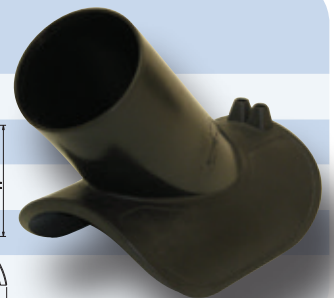
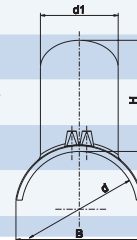
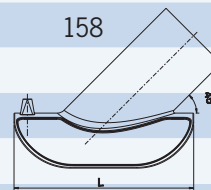
ELECTROFUSION COUPLERS

Size	Code	d	D	L	L1	A
110mm	2016.0110	110	131	163	80	79
160mm	2016.0160	160	193	198	97	104
250mm	2016.0250	250	293	256	126	155
315mm	2016.0315	315	374	284	140	184



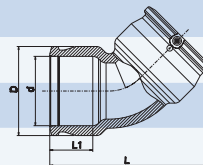
45° ELECTROFUSION SADDLE

Size	Code	d	d1	L	B	H
160 x 110mm	EFSS 1611	160	110	255	182	158
250 x 110mm	EFSS 223111	250	110	255	221	158



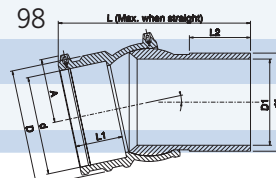
45° ELECTROFUSION ELBOW

Size	Code	d	D	L	L1	A
110mm	EFEL.1145	110	143	272	78	78
160mm	EFEL.1645	160	193	323	98	106
250mm	2104.0250	250	326	571	129	151



ADJUSTABLE ELECTROFUSION ELBOW

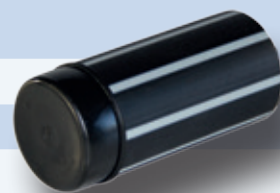
Size	Code	d	D	D1	A	L	L1	L2
160mm	EFAE 160	160	193	141	105	298	78	98



SEWERSTREAM FITTINGS

END CAP

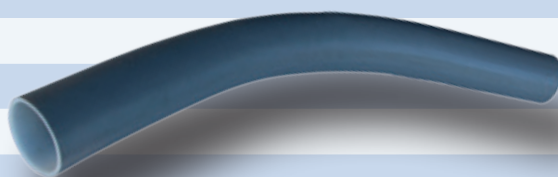
Size	Code	D	L
110mm	SSEC 110	110	260
160mm	SSEC 160	160	280
250mm	SSEC 250	250	330
315mm	SSEC 315	315	358



SWEEP BENDS

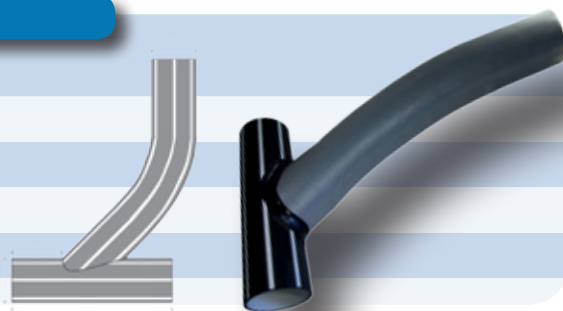
Size	Code	D	A	R
110mm x 45°	SSSB 1145	110	45°	750
110mm x 90°	SSSB 1190	110	90°	750
160mm x 45°	SSSB 1645	160	45°	750
160mm x 90°	SSSB 1690	160	90°	750

Other sizes & angles available on request



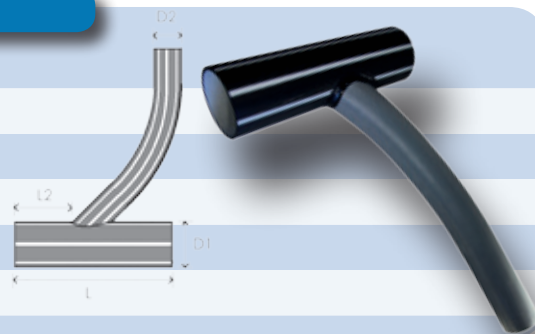
SWEEP JUNCTION - EQUAL

Size	Code	D1	D2	L	L2
110mm	SSSWJ 110	110	110	500	160
160mm	SSSWJ 160	160	160	620	180



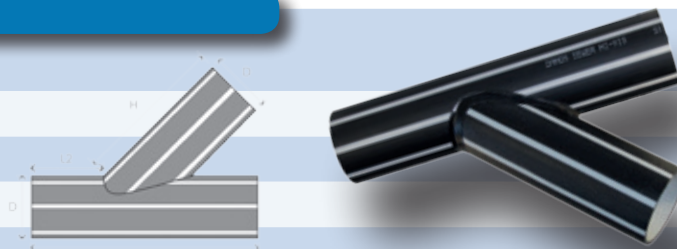
SWEEP JUNCTION - REDUCING

Size	Code	D1	D2	L	L2
160mm x 110mm	SSSWJ 1611	160	110	560	200
250mm x 110mm	SSSWJ 2511	250	110	800	280
250mm x 160mm	SSSWJ 2516	250	160	900	260



JUNCTION - EQUAL

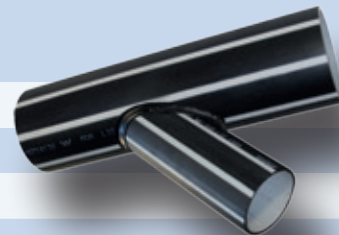
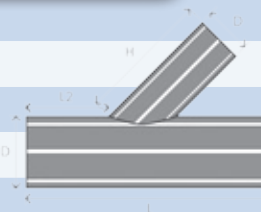
Size	Code	D	L	L2	H
110mm	SSJ 1145	110	500	160	280
160mm	SSJ 1645	160	620	180	360
250mm	SSJ 2545	250	900	260	560



SEWERSTREAM FITTINGS

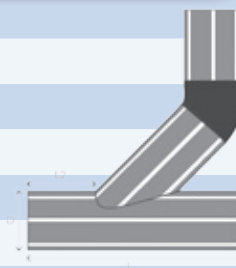
JUNCTION - REDUCING

Size	Code	D1	D2	L	L2	H
160 x 110mm	SSJ 161145	160	110	560	200	300
250 x 110mm	SSJ 251145	250	110	800	280	300
250 x 160mm	SSJ 251645	250	160	900	260	400



JUNCTION – TYPE C

Size	Code	D	L	L2
160 x 160mm	SSJC 16	160	620	180



JUNCTION – CUSTOM

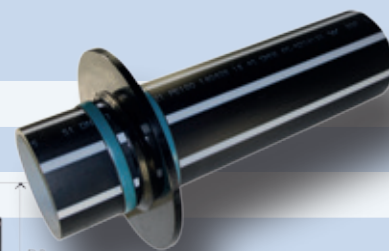
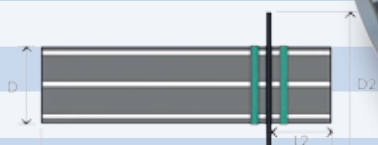
Size	Code	
110/160/250	FAB	Specify dimensions

We can fabricate custom junctions to any angle or size to specification.



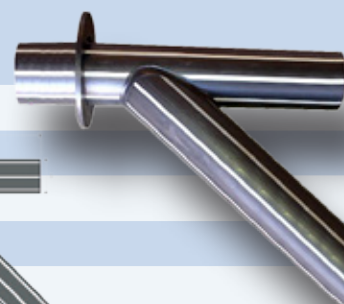
PUDDLE FLANGE

Size	Code	D	D2	L	L2
110mm	SSPF 110 HS	110	250	600	125
160mm	SSPF 160 HS	160	300	600	125
250mm	SSPF 250 HS	250	390	600	125
315mm	SSPF 315 HS	315	455	600	125



EXTERNAL 45° BACKDROP JUNCTION

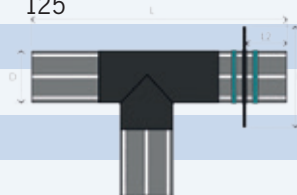
Size	Code	D	L	L2	L3	H
160mm	SSBJ 1645	160	1000	350	280	900
250mm	SSBJ 2545	250	1000	350	280	900



SEWERSTREAM FITTINGS

EXTERNAL 90° BACKDROP JUNCTION

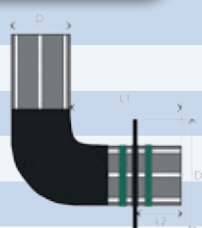
Size	Code	D	D2	L	L2
160mm	SSBJ 1690	160	300	750	125



Available in other sizes on request

EXTERNAL 90° BACKDROP BEND

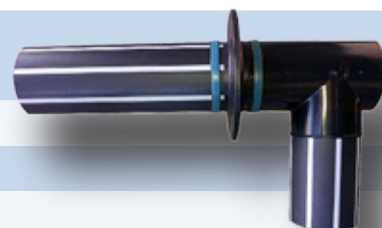
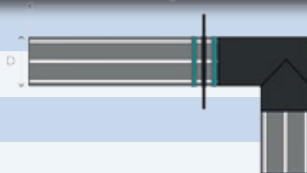
Size	Code	D	D2	L1	L2
160mm	SSBB 1690	160	300	330	125



Available in other sizes on request

INTERNAL 90° BACKDROP JUNCTION

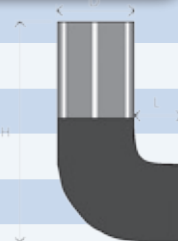
Size	Code	D	L
160mm	SSBJI 1690	160	850



Available in other sizes on request

INTERNAL 90° BACKDROP BEND

Size	Code	D	L	H
160mm	SSBBI 1690	160	100	480



Available in other sizes on request

PVC TO POLYETHYLENE ADAPTOR

Size	Code	L
110mm	SSADP 1110	580
160mm	SSADP 1615	520
250mm	SSADO 2522	900



SEWERSTREAM FITTINGS

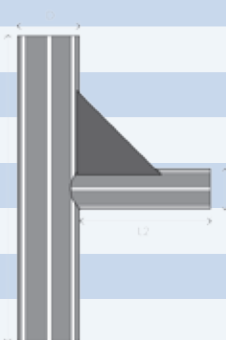
SEDIMENT TRAPS

Size	Code	L
110mm	SSST 110 RRJ	1060
160mm	SSST 160 RRJ	1450



MAINTENANCE SHAFT DROP JUNCTIONS

Size	Code
250 x 110mm	SSDJ 2511W
250 x 160mm	SSDJ 2516W
250 x 250mm	SSDJ 2525W



VERTICAL RISER CAP WITH RUBBER RING

Size	Code	
160mm	SS REC160	Rodding End Cap for terminal entry point
250mm	SS VRC 250W	Rodding End Cap / Maintenance Shaft



FLEXIBLE COUPLING

Size	Code
200mm	SSFC 200
Other sizes available, please enquire	



MAINTENANCE SHAFT

(POOPIT)

1 way 2 way 3 way 4 way

The basic maintenance shaft consists of a PE bulb with one 250mm riser and one 160/250 mm stepped outlet. Fittings used can be PE, RRJ, UR and Hepworth. Up to three inlets may be installed.

All maintenance shafts are made to order.
Please call to discuss your requirements.



How to order a maintenance shaft:

Specify the following details:

- **Upstream angles**, which are calculated clockwise, starting from the downstream outlet being 0°. (Inlets can be placed between 45° and 315°)
- **Inlet pipe** size, material type and the grade (1:4 – 1:300) and the drop to invert ('Invert' is measured from the inside base of the pit)
- **Downstream pipe** size, material type and the grade
- **Depth to invert** (ground level to inside base of the pit)

sewer stream
P00 PIT

ORDER FORM

Contractor: *Smart Contractor*
Job Location: *Some where*
Order Number: *3017*
Date Required: *22/6/17*

Top Hat: ☐ No ☐ L.O. ☒ Yes
Riser Cap: ☐ No ☐ Yes ☒ L.O. ☐ No ☒ Yes
Pallet: ☐ No ☐ Yes ☒ Attached ☐ Unattached
Other: ☐ No ☐ Yes ☒ Attached ☐ Unattached

Please Supply *1x Extra Cap*
Height: *1800*

MS Number: *31*
Depth: *3.200m*

Downstream / Outlet: *150mm* Grade: *1:100*

Drill Date: *06*
Drilled By: *DE*
Checked By: *Corro*
Washed By: *DE*
Pressure Test By: *DE*
Tanner Test: *DE*

Pre-Dispatch Checks By: *DE*
Angle: *190°*
Grade: *1:100*
Welds: *1:100*
Fittings: *1:100*
Drop: *1:100*
Customer Notified: *DE*

Diagram showing a bulb with angles 190°, 270°, 0°, 150°, 140°, 1:40, Drop 800, M-F Junction, Attached.



P00 PIT

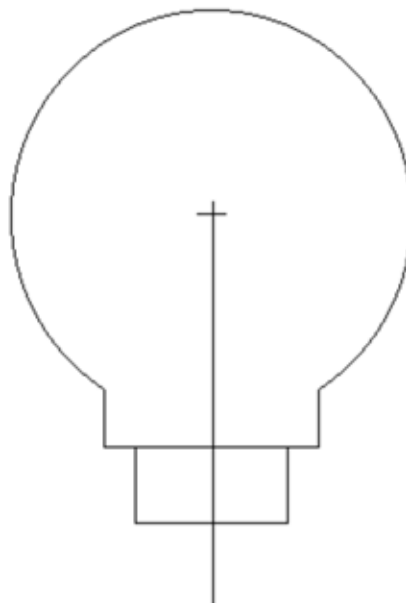
Contractor	:	Order Number	:
Job Location	:	Date Required	:

Cover	No	<input type="checkbox"/>	L.D.	<input type="checkbox"/>	H.D.	<input type="checkbox"/>	CI Concrete Surround	<input type="checkbox"/>
Riser Cap	No	<input type="checkbox"/>	Yes	<input type="checkbox"/>	Fitting Type	<input type="text"/>		
Pallet	No	<input type="checkbox"/>	Yes	<input type="checkbox"/>				
Drop Junction	No	<input type="checkbox"/>	Attached	<input type="checkbox"/>	Unattached	<input type="checkbox"/>	Height	<input type="text"/>
Other	<input type="text"/>							

Customer Code:

MS Number :

Depth:



Downstream / Outlet

Ø Grade 1:

Note
All angles are measured clockwise from downstream

Take-off By:		Checked By:	
---------------------	--	--------------------	--

Drill Date	Pre-Dispatch Checks By:	
Drilled By	Angle
Checked By	Grade
Welded By	Welds
Pressure Test By	Finish
Pressure Test	Fail <input type="checkbox"/> Pass <input type="checkbox"/>	Drop
Tested By	Customer Notified

SEWER STREAM TOOLING

ELECTROFUSION WELDER

Automatic Electrofusion welder

SSEFW

TIP:

ALL TOOLS
AVAILABLE FOR
SALE OR HIRE!

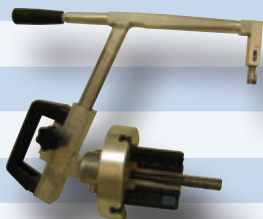


ROTARY SCRAPER

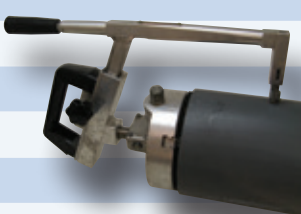
90 – 315mm Rotary scraper

SS315R

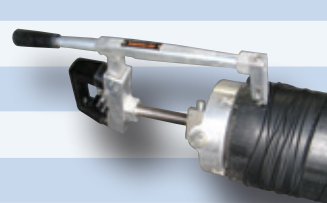
1



2



3



GENERATOR

6Kva generator

SSGEN

TIP:

POWER SUPPLY TO
AN ELECTROFUSION
WELDER MUST BE 6
KVA OR MORE



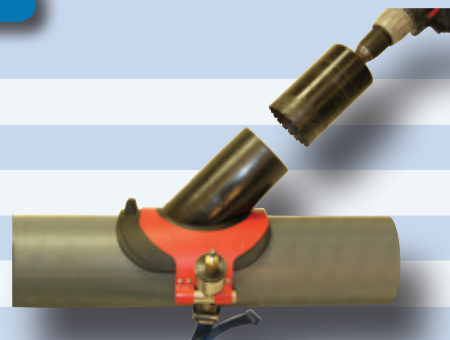
TOOLKIT

Toolkit

SSTK

TIP:

FREE 1 HOUR
ON-SITE INSTALLATION
ADVICE.
PLEASE ENQUIRE!



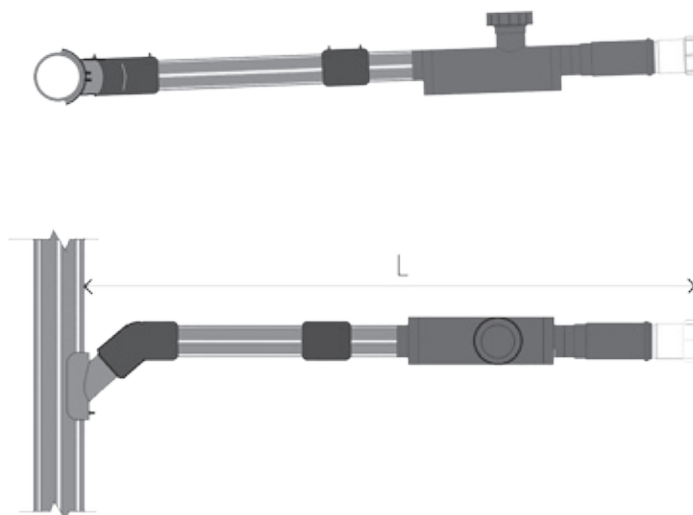
POLYMER WELDING WIPES

Tub of 75

9991.0075

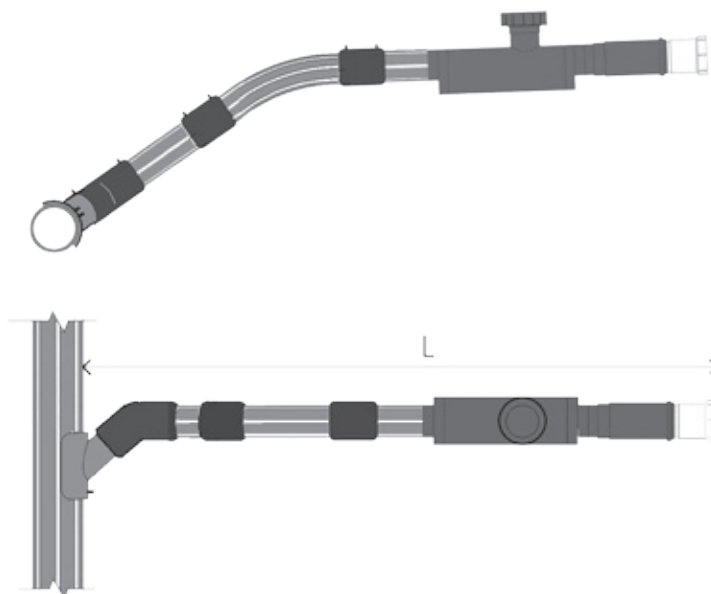


SEWERSTREAM CONNECTION KITS



TYPE A 110mm HOUSE CONNECTION KIT

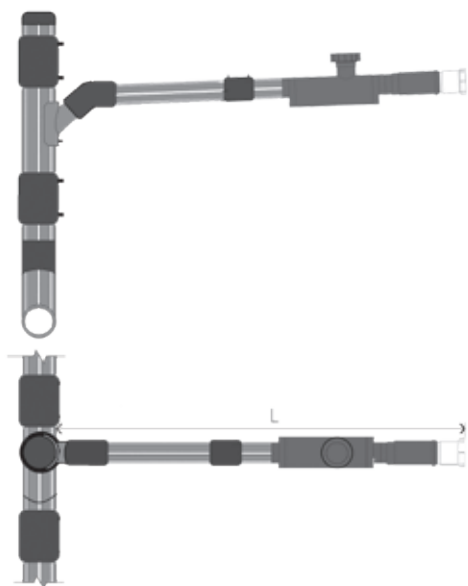
Description	Part number
110mm House connection kit Type A – 1 metre length	SS HCKA 110-1
110mm House connection kit Type A – 3 metre length	SS HCKA 110-3
110mm House connection kit Type A – 5 metre length	SS HCKA 110-5
110mm House connection kit Type A – 7 metre length	SS HCKA 110-7



TYPE B 110mm HOUSE CONNECTION KIT

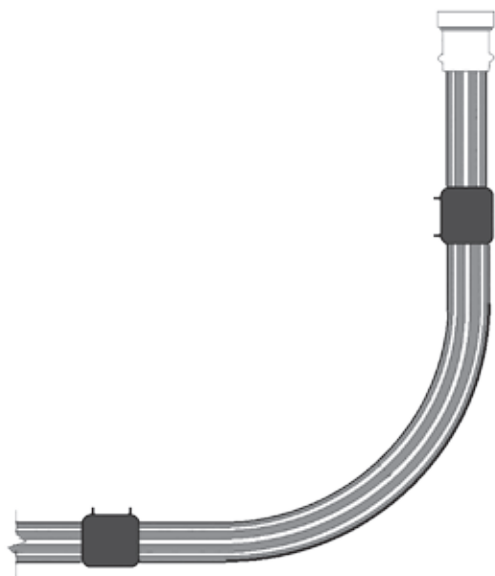
Description	Part number
110mm House connection kit Type B – 2 metre length	SS HCKB 110-2
110mm House connection kit Type B – 4 metre length	SS HCKB 110-4
110mm House connection kit Type B – 6 metre length	SS HCKB 110-6

SEWERSTREAM CONNECTION KITS



TYPE C 110mm HOUSE CONNECTION KIT

Description	Part number
110mm House connection kit Type C – 2 metre length	SS HCKC 110-2
110mm House connection kit Type C – 4 metre length	SS HCKC 110-4
110mm House connection kit Type C – 6 metre length	SS HCKC 110-6



TERMINAL ENTRY POINT KIT

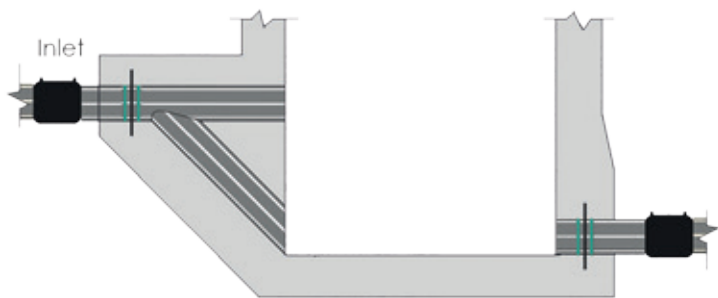
Description	Part number
Terminal Entry Point Kit 160mm	SS TEPK 160
Terminal Entry Point Kit 250mm	SS TEPK 250

SEWERSTREAM MANHOLE KITS



TYPE A MANHOLE KIT

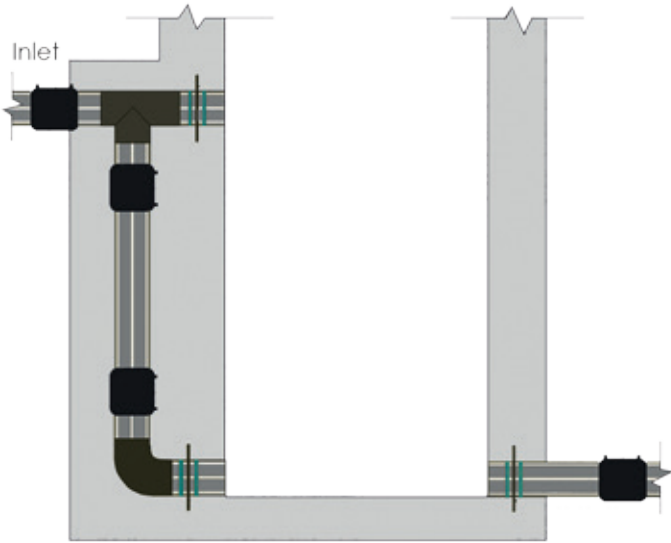
Description	Part number
110mm straight through manhole kit for type A manholes	SS MHKTA 110
160mm straight through manhole kit for type A manholes	SS MHKTA 160
250mm straight through manhole kit for type A manholes	SS MHKTA 250



TYPE C MANHOLE KIT

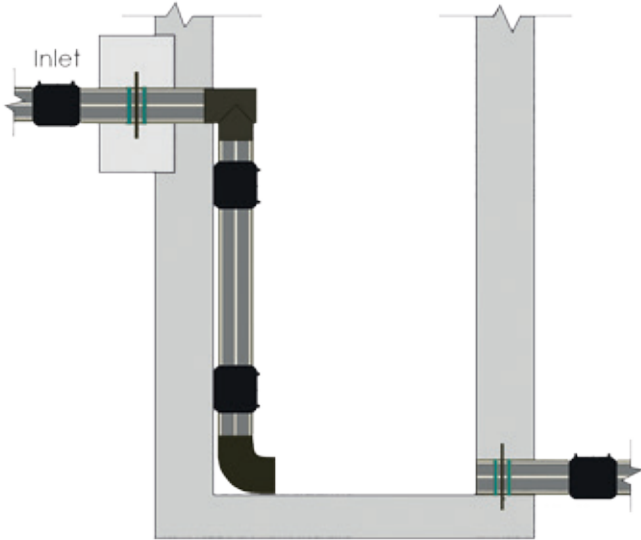
Description	Part number
160mm manhole kit for type C manholes	SS MHKTC 160
250mm manhole kit for type C manholes	SS MHKTC 250

SEWERSTREAM MANHOLE KITS



TYPE D MANHOLE KIT

Description	Part number
External backdrop kit for type D manholes 600-1200 drop	SS MHKTD 160-12
External backdrop kit for type D manholes 1200-2400 drop	SS MHKTD 160-24
External backdrop kit for type D manholes 2400-3600 drop	SS MHKTD 160-36



INTERNAL DROP MANHOLE KIT

Description	Part number
Internal backdrop kit for manholes 600-1200 drop	SS MHKTI 160-12
Internal backdrop kit for manholes 1200-2400 drop	SS MHKTI 160-24
Internal backdrop kit for manholes 2400-3600 drop	SS MHKTI 160-36

PLAN

[illegible]