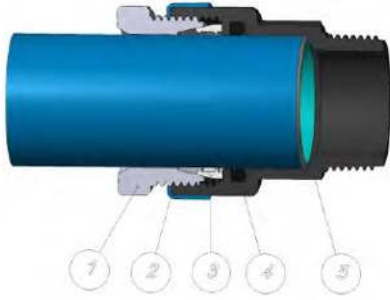


UNIPIPE INSTALLATION INSTRUCTIONS

unipipeair unipipeh2o unipipenitro unipipefire unipipevac unipipeairHP unipipeoilHP unipipeh2oHP

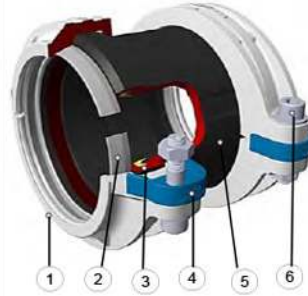
Installation Instructions Sizes 20, 25, 32, 40, 50, 63, 90, 110, 140 & 160

Advanced technology at the core of Unipipe produces a revolution in high pressure piping systems with rapid installation and exceptionally secure joints for transporting fluids, both gas and liquid.



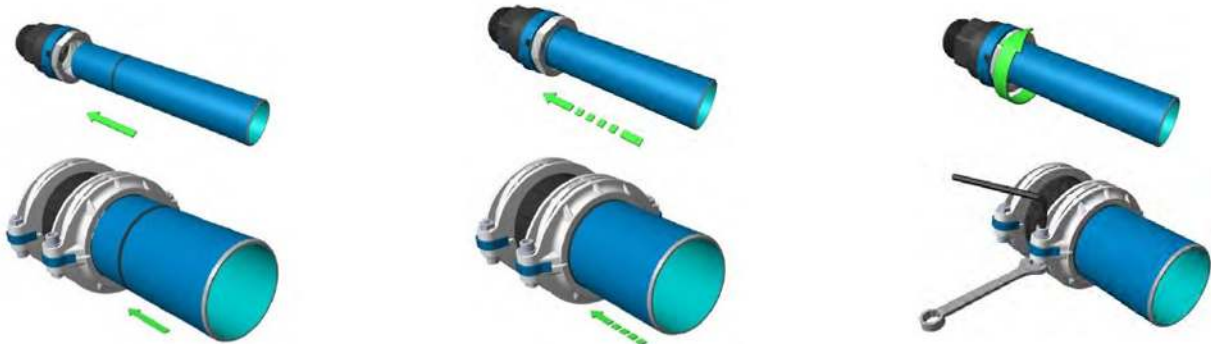
Sizes 20mm – 90mm

1. Nut
2. Identification ring
3. Clamping ring
4. O-ring gasket
5. Fitting body



Sizes 110mm – 160mm

1. Half Blocking Ring
2. Clamping ring
3. Lip Seal
4. Identification Mark Holder
5. Body
6. Bolts



1. CUTTING: Cut the pipe at a right angle using approved pipe cutters, taking into account the insertion depth of the fittings.

2. DEBURRING: All pipe cuts must be carefully deburred, both the inside and outside, using a manual deburring tool.

3. MARK INSERTION DEPTH: To ensure the pipe is correctly inserted into the fitting, mark the pipe using the correct lengths for each size as shown in the table below.

Size	20	25	32	40	50	63	90	110	140	160
L(mm)	35	37	46	56	68	83	118	55	*	134

4. LUBRICATE: Lubricate the marked pipe section using soapy water or any other lubricant compatible with the fluid to be transported through the pipe.

5. ASSEMBLING: Deeply insert the pipe into the fitting until the insertion mark is aligned with the external nut surface.

6. TIGHTEN:
20-90mm: Tighten the nut, this can be done by hand.
110-160mm: Tighten all the bolts at a torque value of 15 N/m.

* 140mm pipe coming soon